

18th ANNUAL SPRING GREAT LAKES NATIVE AMERICAN CULTURAL ARTS CLASSES
Presented by
NATIONAL CENTER FOR GREAT LAKES NATIVE AMERICAN CULTURE, INC.
Women's Building, Jay County Fairgrounds, Portland, Indiana
April 27 & 28, 2019

The National Center for Great Lakes Native American Culture, Inc. will host traditional Great Lakes Native American cultural arts classes at the Women's Building, Jay County Fairgrounds in Portland, Indiana, April 27 & 28, 2019. The classes explore the arts, traditions, culture and history of Great Lakes Native Americans through hands-on classroom experience and presentations by Native American tradition bearers, talented artisans and experts on Native American culture. Four classes for adults age 12 and up and one class for anyone age 6 and up will be offered.

The Jay County Fairgrounds are on Morton and Votaw Streets in Portland (From US 27 go East on Votaw Street to Morton. The Fairgrounds are north of Votaw at Morton Street). The Women's Building is close to the middle of the Fairgrounds and faces Morton Street.

Registration is 8 to 9 a.m. Saturday, April 27. Welcome Circle is 9 a.m. Saturday. **Regular** class hours are 9:30 a.m. to 12:30 and 1:30 to 5:00 on Saturday, April 27 and 9 a.m. to 12:30 p.m. Sunday April 28 for approximately 10 hours of instruction time. The Closing Circle will be at 12:30 p.m. Sunday. **Deadline for receiving registrations is April 20.** Send in registrations early as class sizes are limited and classes with fewer than 5 registered may be cancelled after April 20. Please list your second choice class. After April 20, contact Kay Neumayr, Co-Chair, at 765-426-3022 to find out about class availability. If a class is cancelled you will be notified, so please list your phone number and email address. **Adult classes are limited to age 12 and over. Class fee is \$50 per person for NCGLNAC members and \$75 for non-members. The Culture Class is Saturday only and the fee is \$30. The children's class fee is \$20, with a \$5 materials fee.** A materials fee, if any, is listed with each class description and must be paid directly to the tradition bearer before class begins. **Pre-registration is required.** There are a very limited number of partial scholarships available. Request a scholarship application from Linda Andrews at linda.andrews@ncglnac.com or 765-427-9324. **Scholarship application deadline is April 20.**

The Saturday evening dinner will be prepared outdoors by Doyle Blooding's Survival Class. Cost is \$8 per person. **Reservations must be made in advance with registration.** Lunch will be available at any of Portland's many restaurants.

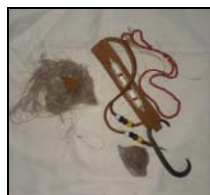
Lodging: Hoosier Inn in Portland (260-726-7113) has rooms at \$59 for one bed and \$65 for two beds per night, plus tax. **Holiday Inn Express** in Portland (260-726-6688) offers \$98 per standard room/\$113 per suite per night plus tax and includes a full breakfast. **Portland Inn** in Portland (260-726-8888) has rooms at \$50 per night (1 or 2 beds), plus tax. Schug House Inn in Berne (260-589-3303) has rooms for \$45 per night. **To receive this special rate, mention that you are attending the NCGLNAC Great Lakes Native American Event.** **Camping** is available at the Jay County Fairgrounds for \$10 per night, electricity only. Outdoor restrooms and showers may not be open. Camp registration and payment must be sent in with the class registration.

Questions? Contact NCGLNAC Cultural Arts Classes Co-Chair Kay Neumayr at kay.neumayr@ncglnac.com or 765-426-3022 or Paula Butcher at 614-581-0654 or paula.butcher@ncglnac.com or visit NCGLNAC's website www.ncglnac.org. The Women's Building is accessible to persons with physical disabilities. *This event is provided, in part, with support from Region 5 Arts Partner Community Foundation of Randolph County, the Indiana Arts Commission, a state agency, with funds from the Indiana General Assembly and the National Endowment for the Arts.*

Cultural Arts Classes



Survival tools



Fire striker & bag



Lenni Lenape wigwam



Beaded turtle & earrings



Corn husk dolls

Survival Skills – Historic & Modern – Doyle Blooding. Doyle is an Army veteran with years of survival training from the western mountains to Alaska. Students will learn a multitude of historical living skills and how they compare with modern methods and then make their own basic fire starting kit including learning how to make char cloth. Doyle will

bring an assortment of tools and demonstrate their uses. This class also includes cooking over an open fire and making the evening meal of traditional stew and other goodies. **Material Fee: \$25** for fire starting kit and various other survival tools.

Quilled Fire Striker Hanger – Bonita Bent Blooding. Bonita is an internationally recognized, award winning quill worker with over 20 years of sharing her gifts and keeping the traditions alive. Steel fire strikers were essential items of convenience and survival and were often hung from belts or bags. Students will learn two basic Eastern Woodland porcupine quill embroidery stitches to create a decorated braintan leather hanger for a fire striker. **Material Fee: \$25.**

Fire Starting – Bonita and Doyle Blooding. Both classes will come together to learn to make fire with flint and steel and share teachings of building a sacred fire versus a fire for cooking.

Seed Beads and Trade Beads – Linda Andrews. Linda has been beading and making jewelry for many years. Students will make one small lined wool or braintan leather pouch with a leather neck strap, seed bead design and edging. Sunday will include finishing the pouch and making two pairs of sterling silver fish hook earrings with real historic trade beads, some over 200 years old. **Material fee: \$20.**

SATURDAY ONLY – Lenni Lenape Culture and Camp – Wilard Sharp, Lenni Lenape. Willard has been doing historically correct period reenactments for over 25 years. He takes pride in educating and telling the truth on what really happened to the First Peoples. Students in this class will build a wigwam of bent saplings and canvas, set up camp and learn about Lenni Lenape (Delaware) culture in “their wigwam dwelling.” **Class fee: \$30.**

Children’s Class ages 6 and up – Rachael Sadowski. Rachael as spent many years teaching many different skills from soapmaking, beading , pottery, basket making and more. Students in this class will, as time permits, make a beaded necklace or bracelet, corn husk doll, a rainstick, use homemade clay to make a cup or bowl, make a possible bag, a ribbon decorative pouch or make a basket. On Sunday the children will join the Lenni Lenape camp to learn Lenni Lennape culture and how to take down the camp. **Material Fee: \$5.**



REGISTRATION FORM

Mail to Kay Neumayr, 4950 N 750 E, Attica, IN 47918

Make Checks Payable to NCGLNAC, Inc.
To Be Received By the April 20 Deadline

Name _____ Phone _____

Address _____ Email _____

City _____ State _____ Zip _____

Culture Class Saturday Only * _____ (\$30 fee) \$ _____

First Choice Class * _____ (\$50 or \$75 fee) \$ _____

Second Choice Class * _____

Each participant must pay a materials fee to the class tradition bearer where indicated

Children’s Class * _____ (\$20 fee) \$ _____

Saturday Evening Meal @\$8 each \$ _____

TOTAL REGISTRATION ENCLOSED \$ _____

Payment Method:

____ Check ____ Cash ____ American Express ____ Discover ____ Master Card ____ Visa

Signature _____ Card Number _____ Exp _____ VC _____